



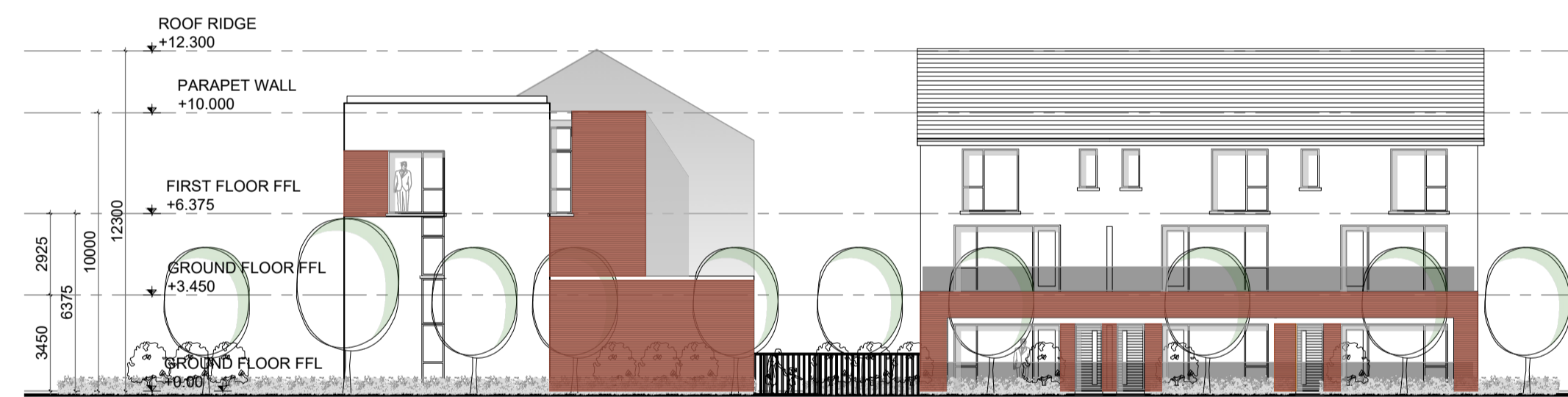
North Elevation A



South Elevation E



East Elevation C

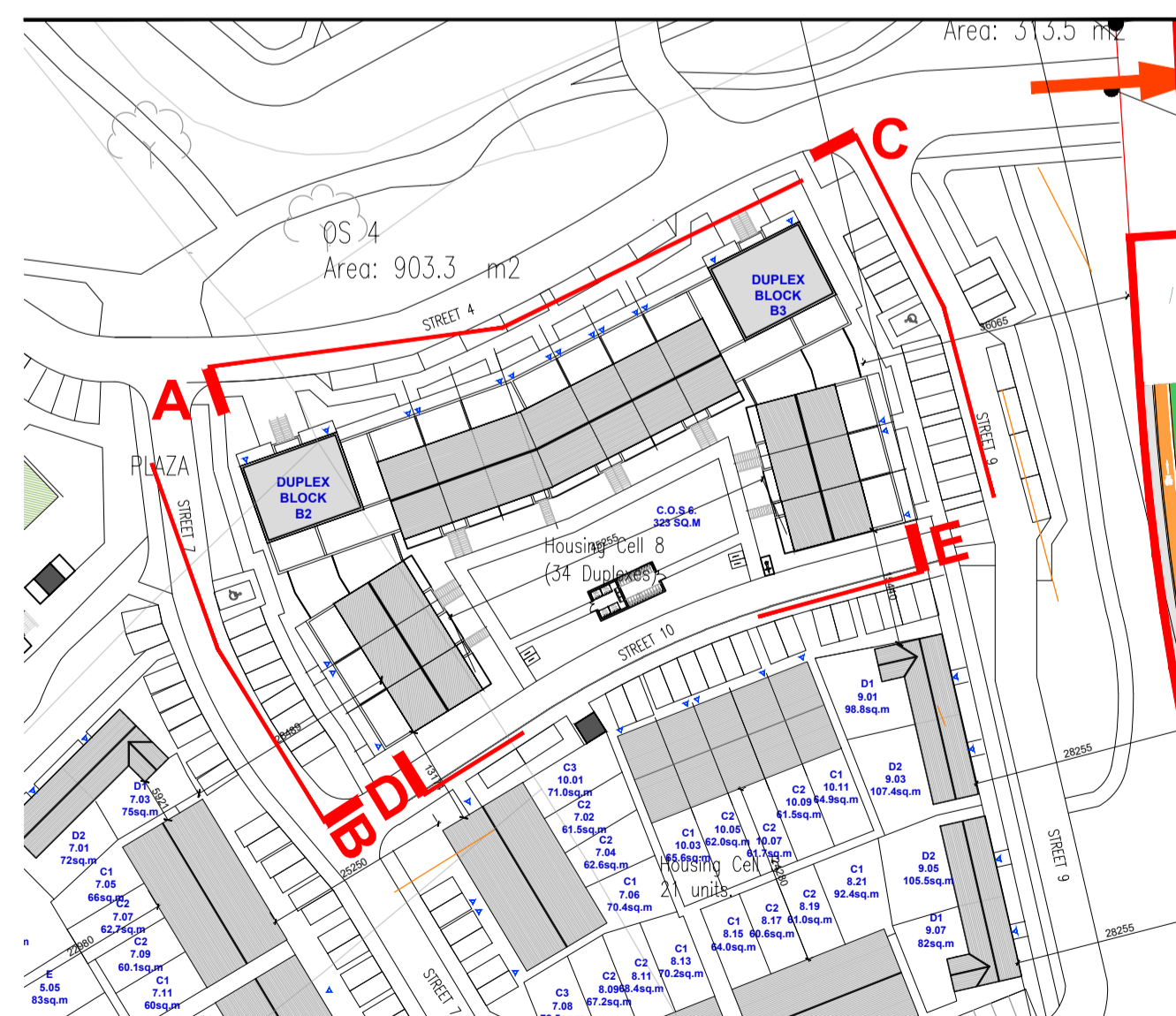
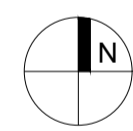


West Elevation B



South Elevation D

KEY PLAN



GENERAL NOTES

THIS DRAWING TO BE READ IN CONJUNCTION WITH ARCHITECT'S DRAWINGS, CONSULTANT ENGINEER'S DRAWINGS AND SPECIFICATIONS & LANDSCAPE ARCHITECT'S DRAWINGS.  
REFER TO ARCHITECT'S SITE PLAN FOR NORTH ORIENTATION.

LEVELS GIVEN ON HOUSE TYPE DRAWINGS ARE GIVEN TO A LOCAL ABSOLUTE ZERO LEVEL. FOR SPECIFIC LEVELS DEPENDING ON INDIVIDUAL UNIT LOCATION, REFER TO ARCHITECT'S CONTEXT SECTIONS AND ENGINEER'S DRAWINGS WHERE LEVELS ARE ALL GIVEN IN RELATION TO LAND SURVEYOR'S BENCHMARK BASED ON MALIN HEAD DATUM LEVEL.

NOTES ON FINISHES:

ROOF: TO BE FINISHED IN SLATE OR CONCRETE ROOF TILES IN SELECTED COLOUR OR SIMILAR APPROVED.

WALLS: SELECTED CLAY BRICKWORK WHERE INDICATED OTHERWISE PAINTED SAND / CEMENT RENDER OR SELF COLOURED RENDER. EXPRESSED BANDS AROUND EXTERNAL OPES/ EXPRESSED LINTOLS OVER EXTERNAL OPES WHERE INDICATED TO BE RECONSTITUTED STONE (LIGHT CREAM LIMESTONE OR GRANITE EFFECT) OR RENDER

JOINERY: ALL WINDOWS AND DOORS, FRAMES AND LEAVES, TO BE ALUMINIUM POWDER-COATED TO APPROVED COLOUR OR UPVC. OBSCURE GLAZING WHERE INDICATED TO SENSITIVE WINDOWS.

RAINWATER GOODS: GUTTERS, DOWNPIPES, AND FIXINGS TO BE UPVC OR ALUMINIUM POWDER COATED TO SELECTED COLOUR TO MATCH ROOF SLATES

UNIT A1	UNIT A3	UNIT A5
1 STOREY - 2 BEDROOMS	1 STOREY - 2 BEDROOMS	1 STOREY - 2 BEDROOMS
AREA SCHEDULE	AREA SCHEDULE	AREA SCHEDULE
GROUND FLOOR 85 m <sup>2</sup> / 915 ft <sup>2</sup>	GROUND FLOOR 85 m <sup>2</sup> / 915 ft <sup>2</sup>	GROUND FLOOR 85 m <sup>2</sup> / 915 ft <sup>2</sup>
TOTAL 85 m <sup>2</sup> / 915 ft <sup>2</sup>	TOTAL 85 m <sup>2</sup> / 915 ft <sup>2</sup>	TOTAL 85 m <sup>2</sup> / 915 ft <sup>2</sup>
UNIT A2	UNIT A4	UNIT A6
1 STOREY - 2 BEDROOMS	1 STOREY - 2 BEDROOMS	1 STOREY - 2 BEDROOMS
AREA SCHEDULE	AREA SCHEDULE	AREA SCHEDULE
GROUND FLOOR 85 m <sup>2</sup> / 915 ft <sup>2</sup>	GROUND FLOOR 113 m <sup>2</sup> / 1216 ft <sup>2</sup>	GROUND FLOOR 85 m <sup>2</sup> / 915 ft <sup>2</sup>
TOTAL 85 m <sup>2</sup> / 915 ft <sup>2</sup>	TOTAL 113 m <sup>2</sup> / 1216 ft <sup>2</sup>	TOTAL 85 m <sup>2</sup> / 915 ft <sup>2</sup>

UNIT B1	UNIT B3
2 STOREY - 3 BEDROOMS	2 STOREY - 3 BEDROOMS
AREA SCHEDULE	AREA SCHEDULE
FIRST FLOOR 60.5 m <sup>2</sup> / 651 ft <sup>2</sup>	FIRST FLOOR 60.5 m <sup>2</sup> / 651 ft <sup>2</sup>
SECOND FLOOR 60.5 m <sup>2</sup> / 651 ft <sup>2</sup>	SECOND FLOOR 60.5 m <sup>2</sup> / 651 ft <sup>2</sup>
TOTAL 121 m <sup>2</sup> / 1302 ft <sup>2</sup>	TOTAL 121 m <sup>2</sup> / 1302 ft <sup>2</sup>
UNIT B2	UNIT B4
2 STOREY - 3 BEDROOMS	2 STOREY - 3 BEDROOMS
AREA SCHEDULE	AREA SCHEDULE
FIRST FLOOR 60.5 m <sup>2</sup> / 651 ft <sup>2</sup>	FIRST FLOOR 83 m <sup>2</sup> / 893 ft <sup>2</sup>
SECOND FLOOR 60.5 m <sup>2</sup> / 651 ft <sup>2</sup>	SECOND FLOOR 83 m <sup>2</sup> / 893 ft <sup>2</sup>
TOTAL 121 m <sup>2</sup> / 1302 ft <sup>2</sup>	TOTAL 166 m <sup>2</sup> / 1787 ft <sup>2</sup>

NOTES:

DO NOT SCALE FROM DRAWINGS. WORK TO FIGURED DIMENSIONS ONLY. ARCHITECT TO BE NOTIFIED OF ALL DISCREPANCIES.

**SHD STAGE 3**

REVISIONS		
DATE	DESCRIPTION	No.

	PROJECT TITLE:	Kilterman Village SHD	DATE:	JUN '22	DRAWN BY:	RS
	DRAWING TITLE:	DUPLIX BLOCK B2 & B3	SCALE:	1:200@A1	REVISION:	-
	External Elevations	JOB NO:	21009	DRAWING NO:	PL309	
	<small>Albert Place West, Harold's Cross, Dublin 2, Ireland Tel: 01-4788700 Fax: 01-4788711 E-Mail: info@mcorm.com</small>					